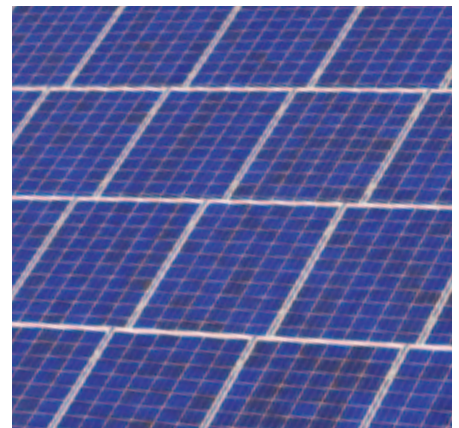
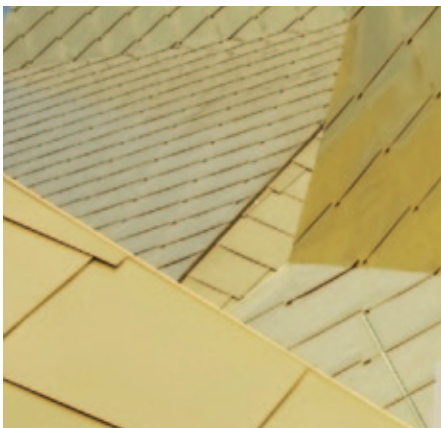
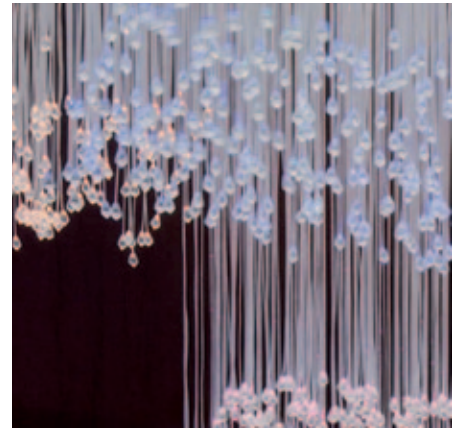


Constructing a Sustainable Future

Focusing on strength in diversity.



constructing a sustainable future



Health & Safety

We place the highest priority on health and safety.



Environment & Climate Change

We aim to protect the environment and plan for its improvement where we can.



Our People

We are committed to developing our people by investing in their careers.



Community

Our objective is to make a positive impact in the communities in which we operate.



Customers

We will give total commitment and high standards to all of our customers.



Supply Chain

We actively engage with our supply chain to promote our principles and practices.

Our vision “to be leaders in the construction of a sustainable future” drives us forward as a business and inspires us to make a positive impact in the areas in which we operate.

The long-term success of our business goes beyond our economic sustainability to embracing our duty to society as a whole. Whilst we continue to demonstrate our commitment to winning work, delivering major projects and thriving as a business, we also work hard to keep the principles of responsible business at the heart of our strategy.

▲ Health & Safety

We believe that all accidents are preventable and our health and safety programme "Challenging Beliefs, Affecting Behaviour" centres around this concept. We maintain that nothing we do is so important that we cannot take the time to do it safely and we promote this through encouraging a culture of care for those on and around our sites.

▲ Environment & Climate Change

We place increasing importance on the environment and climate change across our projects. Our confidence in our ability to deliver quality solutions which preserve or enhance the environment is reflected by our ongoing involvement in the Carbon Disclosure Project. This enables us to publicly measure, benchmark and improve our performance.

▲ Our People

People are our competitive advantage and, by remaining an employer of choice, we can boast some of the best talent in the industry. We therefore value our employees and offer continuous learning and development opportunities in addition to nurturing talent through The Galliford Try Academy and a number of apprenticeships.

▲ Community

As members of the Considerate Constructors Scheme we work closely with the communities around our projects to keep them well-informed about construction works taking place near them. Strong community links through previous contracts and a structured approach to community engagement also underpin the success of our schemes and bring our projects to life.

▲ Customers

We are passionate about customer service. In housebuilding our customer charter outlines our commitment to high standards and surveys enable us to improve our leading performance. Our construction business uses independent customer perception surveys to gauge the values and requirements of our clients so that we can continue to deliver a service which exceeds their expectations.

▲ Supply Chain

Collaboration and innovation form the basis of our approach to our supply chain strategy which establishes and maintains long-term trading relationships with key suppliers and manufacturers. We look to embed our values within our supply chain so that we can maximise our offering to our customers.



We deliver excellence in health and safety through innovative thinking. Our hard-hitting safety DVD "Buried Alive" won industry acclaim for its balanced approach in portraying a real situation where nobody was to blame and excuses were not made. Praised for our positive outlook, we won the Lord Cullen Trophy at the Scottish Chamber of Safety Annual Conference.

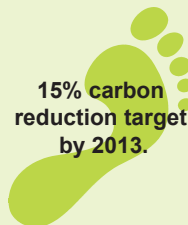


Working in Antarctica, one of the least hospitable environments known to man, we displayed international standards of safety on the site of Halley VI Research Station.

▲ Health & Safety



We have signed up to WRAP's Halving Waste to Landfill agreement. Our aim is to reduce the amount of waste material we send to landfill and maximise the amount of recycling on our construction sites. In 2010, we diverted 39 per cent of our waste from landfill and by 2011, this rose to 79 per cent.



Our target is to drive down our 2008 carbon emissions by 15 per cent by the end of 2013. Our Carbon Task Force is focused on sharing best practice, introducing new initiatives and engaging with our teams and supply chain to achieve this.

▲ Environment & Climate Change

the academy

The Galliford Try Academy ensures a structured approach to career development. In addition to fostering talent Group-wide, it provides employees including trainees, graduates and apprentices with an infrastructure of support when completing programmes which lead to membership of the Chartered Institute of Building, the Royal Institution of Chartered Surveyors, the Institution of Civil Engineers and the Chartered Institution of Civil Engineering Surveyors.



More than 100 apprentices were supported by Galliford Try in 2011.



INVESTORS IN PEOPLE

Our appeal as an employer is reflected by our status as Investors in People.

▲ Our People



All of our sites which operate over six weeks are registered with the Considerate Constructors Scheme.



We run a programme with CRASH where employees are able to provide professional expertise to homelessness projects. St Johns Housing Trust, which provides accommodation, support and resettlement services for homeless people, received assistance from one of our surveyors in developing a scope of works for the redevelopment of one of its buildings. This enabled the trust to make informed decisions when taking the project forward.

▲ Community



95% of customers would recommend Linden Homes to a friend.



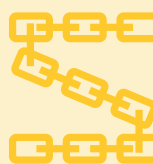
We are keen to share best practice across the industry and ensure the Group plays its part in delivering a sustainable economy. We achieve this through ongoing liaison with key decision-makers, and events such as "Construction Question Time" which proves a lively debate, providing legislators with informed opinion.

▲ Customers



Working together for a world without waste

As part of our commitment to Halving Waste to Landfill, we worked with our housebuilding kitchen supplier Symphony to identify areas for waste reduction in kitchen fit-out operations. We found that waste can be reduced to 13.6 per cent of the weight of the kitchen partly through the use of returnable packaging and more efficient wood cutting. This information was published in a case study by WRAP, forming an industry benchmark.



We are working with British Gypsum to minimise plasterboard waste through an offcuts recycling scheme and through creating bespoke cut plasterboard where possible.

▲ Supply Chain

Our Brands

We operate through a number of brands which have become synonymous with our values of excellence, passion, integrity and collaboration. Through these brands, we are known as one of the UK's leading housebuilding and construction companies, delivering quality solutions in the construction of a sustainable future.



The Galliford Try brand represents plc, our construction operations and our investments business.



Linden Homes is the brand for our Housebuilding business - a top 10 housebuilder offering a distinctive and diverse range of new homes in prime locations.



The brand for Scotland's leading contractor, undertaking construction, affordable housing, housebuilding and PPP investments.



Our national piling specialists operate through the Rock & Alluvium brand.



Regeneco is the brand for our renewable energy services business which has a strong offering to develop, design, construct, operate and finance small, medium and large-scale renewable and low carbon energy solutions.



Our multi-disciplined chartered surveyors and town planners combine all areas of property expertise to offer a seamless service, operating through the Pentland brand. Pentland Estate Management is a property management company.

Our Commitment to Corporate Responsibility

Corporate Responsibility is part and parcel of the way we do business. By adopting best practice and constantly seeking initiatives which add value to our offering, we aim to achieve the future sustainability of our Group in a responsible way.

Contents

Strength in Diversity	02
Housebuilding	04
Prime Locations	06
Individual Design	08
Quality of Build	10
Green Living	12
Customer Satisfaction	14
Affordable Housing & Regeneration	16
Sustainable Communities	18
Innovative Regeneration	20
Partnerships - Overview	22
Delivering Lasting Change	24
Construction	26
Building - Overview	28
A Collaborative Approach	30
Excellence through Innovation	32
Building Responsibly	34
Infrastructure - Overview	36
Forming True Partnerships	38
Scale and Specialism	40
Sustainable Solutions	42
Property Services & Facilities Management	44
Passionate and Trusted	46
PPP Investments	48
Best Value through Collaboration	50
Contact Us	52



"OUR STRENGTH IS THE DIVERSITY OF OUR EXPERTISE. THIS IS WHAT SETS US APART IN HOUSEBUILDING AND CONSTRUCTION. WE HAVE THE FINANCIAL STRENGTH AND SPREAD OF ACTIVITIES TO DO IT ALL, AND THE CALIBRE OF PEOPLE TO DO IT WELL."

Greg Fitzgerald, Chief Executive of Galliford Try.

Strength in Diversity

Galliford Try is one of the leading housebuilding and construction groups in the UK, listed on the FTSE 250. We are recognised for the strength of our diverse operational expertise and our capacity to provide whole-life solutions to major projects.

Our robust business model in housebuilding and construction is reinforced by our significant experience and exceptional competency in regeneration, property services, facilities management and PPP investments. Our ability to deliver integrated solutions across this offering enables our clients, partners and customers to benefit from seamless solutions, scale and specialism, financial strength and, ultimately, confidence in the delivery of best value, sustainable, multi-disciplinary solutions.

Built on our values of excellence, passion, integrity and collaboration, this offering is delivered by the best people in the industry, with a vision to be leaders in the construction of a sustainable future.

Housebuilding

We are a leading housebuilder developing award-winning homes in the most sought after locations. Delivering our offering through our highly acclaimed brand Linden Homes, we pride ourselves on attention to detail, individual design, quality of build and customer satisfaction.



1



2



We create schemes of distinction in prime locations across the UK, differentiating our developments through exclusive design and distinguishing features.

Our signature homes are renowned for their expert build, high specification and for encouraging a more sustainable way of living.

Coupled with our unrivalled levels of customer service, this offering makes us one of the UK's leading housebuilders.

"I WANTED QUALITY AND THAT IS WHAT I HAVE RECEIVED;
FROM THE SERVICE TO THE NEW HOME, I AM ABSOLUTELY
THRILLED."

Adam O'Brien, a Linden Homes customer at our Breeze development in Bournemouth.



"BOXGROVE GARDENS IS IN A GREAT LOCATION, SURROUNDED BY GREENERY, YET WITHIN A MILE OF GUILDFORD TOWN CENTRE. THERE ARE GREAT FACILITIES FOR FAMILIES NEARBY AND FANTASTIC SCHOOLS IN THE AREA."

Rachel Weatherall, Linden Homes customer.



1. Rolling countryside and an abundance of parkland are on offer at Epsom Clusters, Surrey.
2. Adjacent to the sea, Two Coves in Cornwall provides direct access to a private beach.
3. Apartments at Splash are in a waterfront location in Ocean Village, Southampton.
4. Boxgrove Gardens is a collection of character homes set in the picturesque town of Guildford, amid rich history and culture.



HOUSEBUILDING

Prime Locations

Our success in housebuilding is based on our proficiency in identifying the best land opportunities and bringing these to fruition.

We excel in building homes in prime locations, using the strength of our geographical spread to our advantage. The experience of our regional businesses provides us with an in-depth knowledge of the areas where we build. Combined with our expertise in the planning process and commitment to community engagement, this gives us the capacity to increase the value of the land we acquire while enhancing the local environment. Working closely with local stakeholders, we identify the housing needs of each area to create new communities where people aspire to live. This focus has enabled us, not just to build new homes, but to build the right homes in some of the most desirable locations across the country.



1. Watercolour, a waterside village of high specification homes in Surrey, is a Building for Life award winner.
2. Winner of a "Best Development" award from What House?, Little Eaves uses natural materials to blend in with the local vernacular in Holbeton, Devon.
3. "be:" in Newhall, Harlow has scooped accolades at the Housing Design Awards, Housebuilding Innovation Awards and What House? Awards whilst achieving the Building for Life "Gold" standard.
4. Sawmills in Blamphayne, Devon offers luxury barn-style homes with hardwood oak flooring.
5. With a boutique hotel-styled lobby, The Royal Apartments is a stylish development in Henley-on-Thames. It is the winner of an Evening Standard award in the "Best Conversion" category.
6. Homes at South Gate in Totnes, Devon achieve the EcoHomes "Excellent" rating. The overall scheme is a Housing Design Award winner.
7. The homes at Thornbury Park in Isleworth blend contemporary architecture with sensitive period conversions within the Spring Grove conservation area.
8. Kingston Mills in Bradford on Avon offers a seamless extension to the historic town centre. The development has been recognised with a "Local Regeneration and Renewal Award" from The Royal Town Planning Institute.

HOUSEBUILDING

Individual Design

Our reputation for building well designed, individual homes precedes us. Externally our homes set the standard in their local settings and internally they provide the pinnacle of style.

Whether we are building waterfront studio apartments or luxurious five bedroom houses, we complement the local vernacular and collaborate with some of the industry's renowned architects to create distinctive homes with unique attention to detail.

We offer a diverse range of homes, from character cottages to stylish contemporary apartments, receiving high acclaim across the industry for our boldness, individuality of design and flawless finish.

The UK's largest carbon neutral development, Graylingwell Park in Chichester received a "Gold" Building for Life award. The scheme will provide in excess of 750 homes, 40 per cent of which will be affordable. Our renewable energy business Regeneco is helping the development achieve net zero carbon emissions partly through the provision of an energy centre which incorporates a combined heat and power plant.

HOUSEBUILDING

Quality of Build

Our impeccable standards have led to the Linden Homes brand becoming synonymous with excellence. We are passionate about creating homes with great merit, sourcing the right materials for each development and taking care to ensure that our homes are finished to the highest standards on each and every handover.

We are committed to building excellence, developing new homes to comply fully with building standards and regulations, and using modern sustainable construction and conversion methods wherever possible. Together with our membership to the NHBC (National House-Building Council) warranty service, this gives our customers confidence in design, material specification and workmanship. We also integrate energy efficient features and strive to future-proof our homes, aiming to reduce both the running costs for our homeowners and the overall carbon footprint of each development.





"THE ARCHITECTURE CREATED FOR THIS DEVELOPMENT IS TAILORED TO REPRESENT TRADITIONAL HOUSE FORMS BUT WITHOUT HIDING THE MODERN ETHOS THEY REPRESENT...SIGNIFICANT BELTS OF EXISTING TREES ARE RETAINED AND MAKE A POSITIVE CONTRIBUTION TO THE CHARACTER OF THE DEVELOPMENT."

Building for Life judges on Graylingwell Park.

HOUSEBUILDING

Green Living

We work to ensure our homes and developments embrace sustainability, enabling our customers to benefit from both style and greener living.

The majority of our schemes are built on brownfield sites, rejuvenating land which has previously been developed for residential, industrial or commercial use and helping to preserve the green belt and our valued countryside.

We use our renewable energy business Regeneco to power and heat our developments with sustainable solutions including district energy centres, solar panels, ground and air source heat pumps, and wind turbines if required. Many of our developments utilise a range of energy saving measures such as rainwater harvesting devices, high grade insulation and intelligent ventilation systems to improve the environmental performance of our homes.

We are renowned for our ability to build energy efficient exemplary schemes adopting sustainable design principles, as a wide range of awards testify.



1



2



3



4

1. High energy performance at Northfields in Colchester is primarily achieved through a highly insulated building envelope, timber framed construction, high performance doors and windows which are sized and orientated to maximise daylight, and passive solar heating.
2. Eco-friendly features at Freshney Green in Grimsby include solar panels, timber frames with enhanced insulation and access to a community garden.
3. Environmental sustainability is embedded at Graylingwell Park, one of the UK's largest carbon neutral developments, which boasts its own energy centre, photovoltaic roof panels and energy efficient design. The scheme in Chichester was named "Best Sustainable Development" at the What House? Awards, "Best Low or Zero Carbon Initiative" at the Housebuilder Awards and "Sustainable Larger Housing Project" at Inside Housing's Sustainable Housing Awards. The innovative scheme sets the benchmark for sustainable living.
4. Epsom Clusters in Surrey makes use of FSC certified timber for building and furnishing which contributes to the EcoHomes "Excellent" rating on all new builds at the development.
5. Green roofs and rainwater harvesting systems add to the efficiency of our homes at Market Quarter in Bristol.



5

"THIS IS THE BEST MOVE WE HAVE EVER MADE. WE ARE STILL OVER THE MOON AT HOW IT HAS ALL WORKED OUT – THE LOCATION, THE BUILD, THE QUALITY OF THE HOUSE AND THE INTERNAL LAYOUT ARE ALL THAT WE COULD ASK FOR."

Chris Luff, a customer at Linden Homes' Watercolour development.



1. With spacious rooms, Ferriby Rise ticked all the right boxes for Julie and Shane Colbrook.

2. The Mills family felt as if they were "constantly on holiday" in the picturesque surroundings of Watercolour.

3. In addition to excellent customer service, Claire Cavalli was charmed by the countryside location and traditional design of her new house in Fernley Park.

4. The open plan layout at Freshney Green appealed to Gav Kidal.



3

HOUSEBUILDING

Customer Satisfaction

We understand the challenges that come with buying a new home so we put every effort into ensuring our customers' experiences with us provide the perfect foundation for their new beginnings.

We are just as enthusiastic about finding the perfect home for our customers as they are and so we guarantee total commitment at every stage of the home-buying process. We respond to queries, listen to and value opinions, and act on feedback to make every customer's journey as smooth as possible.

This pledge to delivering industry leading levels of customer service is reflected by a number of accolades and an impressive recommendation rate from the people our homes are built for. Of all our awards this is our proudest achievement.

Affordable Housing & Regeneration

We have an industry leading position in affordable housing and regeneration, working with a range of partners to create innovative, award-winning places in which communities can thrive.

We are passionate about creating sustainable communities and our expertise is key to our proficiency in this.

Our ability to deliver exceptional mixed tenure housing schemes is underpinned by our skill in consulting with communities, forming close partnerships with Registered Providers (RPs) and local authorities, and building quality affordable homes that people want to live in. In addition to being lead development partner with the Homes and Communities Agency, we are partners with more than 60 RPs and in long-term frameworks with more than 40. Throughout these partnerships we have become known for delivering innovative regeneration and bringing low and zero carbon schemes to fruition.



"EVOLVE HIGHLIGHTS HOW SUCCESSFUL THE PARTNERSHIP BETWEEN PLYMOUTH CITY COUNCIL, DEVON & CORNWALL HOUSING, LINDEN HOMES AND WESTCO HAS BEEN. THE AREA IS IN THE PROCESS OF BEING TRANSFORMED FOR THE BENEFIT OF THE COMMUNITY AND THIS AWARD IS THE ICING ON THE CAKE."

Tony Franklin, Head of Business Investment for Devon & Cornwall Housing, on Evolve winning "Best Social Housing Development" in the South West in the LABC (Local Authority Building Control) Building Excellence Awards.

Evolve will provide 225 homes, 40 per cent of which will be affordable. It offers stylish urban properties replacing the previous post-war buildings in and around Ker Street in Devonport, forming a focal point in the region's regeneration.

Sustainable Communities

Lasting transformative change is integral to building sustainable communities. This means going beyond the bricks and mortar to the heart of those people who will occupy the developments we construct.

We consult extensively with these stakeholders through highly experienced teams to ensure that the developments we deliver will be successful for years to come. Gaining stakeholder input is an absolute priority because we realise that every project is different and it is only by listening to the needs of residents and clients and applying our experience that we can identify the best solutions.

To that end we make full use of masterplanning sessions, site tours, design workshops and exhibitions to engage with the local community. We ascertain their views and requirements so that we can transform the site into their vision for the development.

Our long-established relationships with clients, the Homes and Communities Agency, local authorities and Registered Providers also provide us with a clear insight into the sector priorities within affordable housing and regeneration, enabling us to ensure these objectives are met to the highest of standards, whilst incorporating sustainable solutions.

"IT IS THE TOTAL INTEGRATION OF THE PLANNING AUTHORITY, LOCAL PEOPLE, ARCHITECTS AND DEVELOPMENT TEAM WORKING TOGETHER TO DELIVER HOMES OF EVERY TYPE WHICH MAKES THIS SCHEME WORTHY OF NATIONAL ATTENTION."

Judges of the Housing Design Awards on South Gate, Totnes.



1. South Gate in Totnes provides 51 eco-friendly homes, over half of which are affordable. Community consultation was key to the success of the project and monthly meetings were held to keep local residents informed of our plans and progress. We also attended council meetings to explain each element of the project, to address concerns and to continue local engagement. Frequent site tours were arranged by us in order for all stakeholders to view progress on site.

2. Our strong regional focus significantly contributed to winning the project to regenerate the former Yarborough Estate - 78 per cent of the local community voted for us to undertake the scheme. Community engagement has remained a key theme since being awarded the project. Regular newsletters and workshops have informed residents of our progress; masterplanning sessions have gained their views on the development and local schoolchildren have also had an input into the scheme. They were invited to devise a new name for the area, putting forward the winning name "Freshney Green". The community was also involved in a street-naming competition. Ongoing initiatives have seen us sponsor the local school's gardening projects and host community fun days.

3-5. We deliver successful community driven schemes through stakeholder engagement.





AFFORDABLE HOUSING & REGENERATION

Innovative Regeneration

Our approach to embracing change and driving innovation spans the full lifecycle of our projects. From early involvement, design, planning and construction through to delivery and beyond, we continuously look to enhance our offering and provide a competitive edge.

We deliver excellence by finding solutions which harness housing, community and business investment to provide rejuvenated communities and an enduring legacy of quality. Our regeneration schemes bring together skills from across the Group and our enthusiasm for excellence.

We are well experienced in delivering high quality schemes on brownfield sites, with a capability to undertake remediation works and create supporting infrastructure for our sites. We are known for our ability to pioneer low energy construction methods and our impressive portfolio of low and zero carbon developments is testament to our proficiency in providing renewable energy solutions.



1

1. Epsom Clusters is the regeneration of a number of former hospital sites located in Surrey. The development, achieving the EcoHomes "Excellent" rating, will provide 700 new homes, 40 per cent of which will be affordable. The key objectives of the scheme were to bring the site to market within a short period of time making best use of this surplus public sector land; to deliver a high quality scheme demonstrating best practice in terms of urban design and environmental standards, and to make a significant contribution to the provision of affordable and private housing in an area of high housing need.

2. Kingston Mills, the site of a former rubber works in Bradford on Avon, will feature 170 homes (30 per cent of which will be for rent or shared ownership) and commercial elements including office space, a wine bar, restaurant, convenience store and community use building. It has involved major refurbishment works to listed structures, works to the adjacent river and making provision for a cable-stayed footbridge. The development is a winner of the Royal Town Planning Institute's "Local Regeneration and Renewal Award".



2

Partnerships

We are a market leader in the delivery of complete partnership housing solutions across the UK. We offer vast experience and expertise in affordable housing and are known for regenerating communities with residential-led mixed use, mixed tenure developments.

We undertake design and build contracting, mixed tenure and speculative development, estate regeneration and property support services nationwide. Innovation in the design process is integral to our success and we have delivered many industry firsts on our schemes, including the UK's first carbon neutral vicarage as part of an eco-exemplar affordable housing development. End user satisfaction is ensured through adopting a cohesive approach based on early involvement, collaboration and specialist sector knowledge. This award-winning formula has earned us an unparalleled reputation for creating partnerships for delivery.

"GALLIFORD TRY'S URBAN EXPERIENCE MEANS THEY ARE NOT AFRAID TO TAKE ON EVEN THE MOST COMPLEX INNER CITY SCHEMES. AT TARLING AND WATNEY, THEY MANAGED A WHOLE SERIES OF CHALLENGES WITH GREAT EFFICIENCY AND TACT. THE RESULT IS A SUCCESSFUL, HIGH-DENSITY COMMUNITY IN AN ATTRACTIVE AND WELL-PLANNED ENVIRONMENT."

Alan Williams, Group Development Director, One Housing Group.



Delivering Lasting Change

We have an enviable track record in delivering successful affordable housing schemes in some of the most socially challenging areas.

Our ability to succeed is based on our strengths in partnering with clients and communities to establish their objectives and ensure they are met to the highest standards. Through close collaboration, we are able to identify potential improvements in their key areas of focus and deliver lasting results. We build long-term relationships with the communities we work with and take an active interest in local projects, adding value to the schemes we are involved in by improving the efficiency of the design, procurement and construction process to drive down costs and increase the quality of the homes we build.

Our technical team, including mechanical, electrical and renewable technology engineers who are also assessors for the Code for Sustainable Homes, SAP (Standard Assessment Procedure) and NHER (National Home Energy Rating scheme), is well equipped to ensure we deliver best value while meeting and exceeding increasing sustainability requirements on our developments. Using this expertise, we have devised revolutionary, cost-effective, low energy construction methods enabling us to forge a radical future agenda for regeneration, construction and green living. With a strong focus on increasing the long-term efficiency of housing schemes, we are trialling post-occupancy monitoring on a number of our schemes to not only demonstrate that our buildings perform how they are designed to, but to educate residents on how they can improve efficiency in water consumption, electricity use and ultimately decrease the costs associated with running a home.

Testament to our ability, we are recognised as a key player in the affordable housing market, delivering award-winning sustainable schemes across the UK.

1. Barking Foyer is a striking residential building in London providing 112 bed-sit homes, four wheelchair access homes and two homes for carers. It also provides training and support facilities for the rehabilitation and re-integration of young people back into work. Modern methods of construction on the project include the installation of bathroom pods, ground source heat pumps, and in slab heating and cooling techniques.
2. Reed Street, comprising 21 carbon negative homes in Tyneside, forms one of the country's largest solar powered affordable housing projects. The homes are the first in the region to be built to not only meet but exceed Level 6 of the Code for Sustainable Homes and will consist of nine, three bedroom houses and 12 two bedroom apartments. Real-time data on hot water, rainwater and electricity use will assist us to help residents embrace the sustainability of their homes beyond the build by providing guidance on water and energy consumption.
3. This award-winning affordable housing development on the site of a former nursing home in south east London provides 119 one, two, three and four bedroom mixed tenure homes, 12 of which have been designed for wheelchair users. Elmgrove House embraces sustainability through the use of recycled materials and water and energy saving measures. Additionally, 20 per cent of the scheme's heat and electricity needs are met by on-site renewable energy sources. This exemplary building was awarded "Demonstration Project" status by Construction Excellence.
4. We are undertaking one of the UK's largest residential regeneration programmes at Gateshead. The scheme will see the creation of 2,400 homes for affordable tenures and private sale together with community facilities. All homes will achieve Level 4 of the Code for Sustainable Homes.
5. Innova Park provides 270 mixed tenure homes and a community centre in Enfield. 30 per cent of labour on the project was sourced locally. In addition, eight apprenticeships were provided.
6. Attaining Level 6 of the Code for Sustainable Homes, the carbon neutral St John's Vicarage forms part of a mixed use scheme in Wembley. It delivers 20 new affordable homes achieving Level 4 of the Code for Sustainable Homes in addition to a new community centre which will achieve the BREEAM "Excellent" rating.



Construction

We are a leading construction company, carrying out building and infrastructure works across the UK. Operating as both Galliford Try and Morrison Construction, our spread of work for both public and private sector clients is well balanced and extensive and we are renowned for our ability to provide whole-life solutions.

Recognised for our high standards of project delivery, our approach to innovation and the diversity of our activities, we deliver seamless, integrated and sustainable solutions that contribute to the enhancement of the built environment.



1. St Pancras Renaissance London Hotel.

2. Centre Court, Wimbledon.

3. M74 Completion Project, Glasgow.

4. Spen Valley Wastewater Treatment Works, Yorkshire.

"THE COMPLETION OF THE M74 WAS THE STAND-OUT PROJECT IN THE OVER £50M CATEGORY DUE TO ITS EXEMPLARY PERFORMANCE IN EVERY WAY...SAFETY, COST, TIME AND QUALITY WERE EXEMPLARY."

The Construction News Awards judges on the M74 Completion Project winning "Best Project over £50m".



CONSTRUCTION

Building

With an exceptional portfolio of landmark projects, we are a major force in building. We distinguish ourselves through the provision of specialist services across a wide range of sectors delivering multi-disciplinary projects with acknowledged proficiency.

We are a valued partner of those we work with, carrying out both long-term building programmes and individual projects with a collaborative approach that harnesses the strengths of all involved.

From the complexities of period listed properties to modern, intelligent buildings, we pride ourselves on providing solutions that exceed expectations, employing emerging construction techniques to provide excellence through innovation.

We always build for the future, with the environment and our end users in mind, to deliver leading-edge, sustainable buildings.

Our Sectors >

- | | | |
|--|--|---|
| 1. Accommodation:
National Policing Improvement Agency residences, Warwickshire. | 2. Arts & Entertainment:
LH2 Studios, London. | 3. Commercial:
One Lothbury, London. |
| 4. Custodial & Judicial:
Warwickshire Southern Justice Centre, Warwickshire. | 5. Education:
Sports Hall at City of London Academy - Islington, London. | 6. Extra Care:
Ealing Elderly Care PFI, London. |
| 7. Health:
Lowe House Health Care Resource Centre, Cheshire. | 8. Hotels:
Hotel La Tour, Birmingham. | 9. Refurbishment & Fit Out:
Seafield House, Aberdeen. |
| 10. Retail:
Marks & Spencer, Cheshunt. | 11. Sports Facilities:
Evesham Leisure Centre, Worcestershire. | 12. Stadia:
Edgbaston Stadium, Warwickshire. |



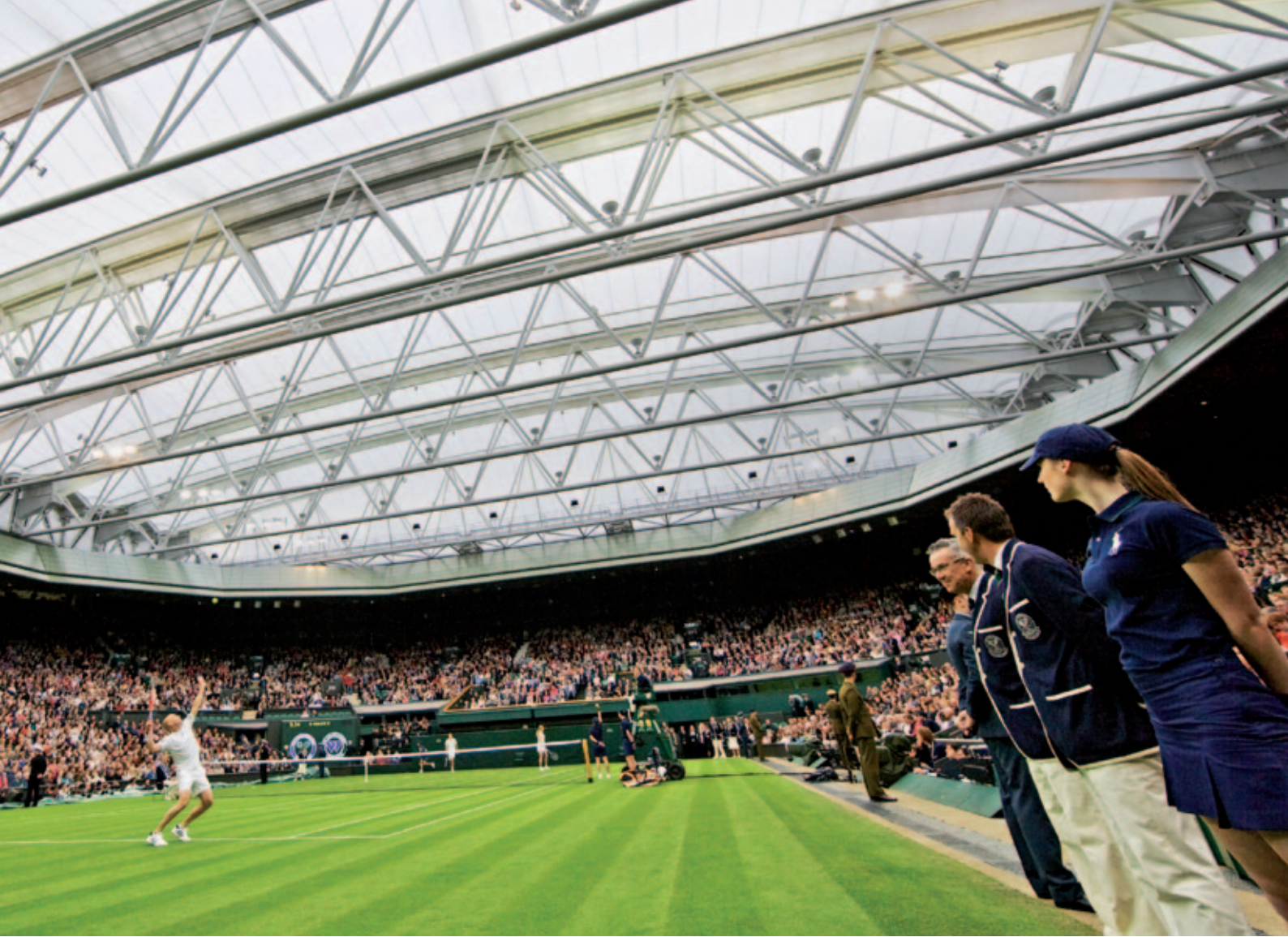
CONSTRUCTION > BUILDING

A Collaborative Approach

We pride ourselves on delivering excellence across our offering and are consequently a valued partner of those we work with.

We look to form long-term partnerships with our clients, aligning their needs on a project-to-project basis with their long-term ambitions and requirements. Our cohesive approach enables us to become a seamless extension of their teams, positioning us well to gain a full understanding of project targets and drivers to ensure that we can add value across the construction process. We have an impressive track record in working alongside public sector bodies in major partnerships including LIFT, PPPs, Public Land Initiatives, Frameworks Scotland, Building Schools for the Future and the Scottish hub programme. Our success is underpinned by our desire to provide time and cost efficiencies with integrity and openness.





"OUR PARTNERSHIP WITH GALLIFORD TRY HAS ENABLED THIS EXTREMELY CHALLENGING AND HIGH PROFILE PROJECT TO BE DELIVERED ON TIME, AROUND, AND WITHOUT ANY DISRUPTION TO THE ANNUAL WIMBLEDON CHAMPIONSHIPS."

The All England Lawn Tennis and Croquet Club.



3

1. The Centre Court redevelopment and the construction of its retractable roof forms a recent chapter in our well established working relationship with The All England Lawn Tennis and Croquet Club which spans more than 30 years. Wimbledon has adopted a programme of almost continuous improvements which need to be accommodated around its annual world renowned tournament. Our close relationship with The Club has been key to the successful delivery of this.
2. Galliford Try has a 20 year framework partnering agreement for construction services with Liverpool & Sefton Health Partnership (LSHP) Ltd. Our partnership with LSHP has delivered many innovations including Picton Neighbourhood Health & Children's Centre which has combined a health centre with a SureStart local authority children's centre for the first time under a LIFT scheme.
3. Millburn Academy is the eleventh school to be delivered for The Highland Council in the largest building programme ever to be undertaken by a local authority in the Highlands. We have worked with the council on a variety of projects, from public buildings to industrial estates. Our strong relationship is based on our ability to consistently understand and deliver the council's objectives in line with its long-term aspirations.



CONSTRUCTION > BUILDING

Excellence through Innovation

Our experience in pioneering innovative schemes which deliver added value for our clients is demonstrated in a number of prestigious projects across the UK.

Driven by our enthusiasm for providing leading-edge solutions and continuous improvement, innovation is embedded across the lifecycle of our projects and in the materials we use and the processes we employ. We constantly challenge existing methods through ideas forums which identify, investigate and maintain an up-to-date overview of the latest developments in construction products, processes and techniques. This forward thinking approach has earned us a place at the forefront of the industry working on highly acclaimed building projects.

1. The Museum of Liverpool is a world leading museum which showcases Liverpool's unique geography, history and culture. Innovative building techniques have played a large role in bringing this project to fruition, overcoming construction challenges such as the proximity of the Mersey Railway Tunnel beneath the site. In addition, the attainment of leading air tightness levels contributes to the protection of the artefacts kept within the museum.

2. One of the country's most high profile restoration projects, St Pancras Renaissance London Hotel demonstrates the use of innovative construction techniques. Instigating the use of pre-fabricated bathroom pods, composite roofing and wall cladding panels for the new hotel wing eliminated the need for complex scaffolding alongside the international rail terminal, enclosing the building faster to allow final fit-out to commence. Changes to the access philosophy were agreed with the authorities to allow occupation of the first residential phases almost two years ahead of the hotel completion.

"WITHOUT DOUBT, THE RENAISSANCE OF ST PANCRAS IS AN OUTSTANDING ACHIEVEMENT FOR WHICH ALL THOSE INVOLVED SHOULD FEEL INCREDIBLY PROUD."

Paddy Pugh, Planning Director for London, English Heritage.



2



CONSTRUCTION > BUILDING

Building Responsibly

We are committed to providing sustainable solutions across our projects, advising on the best use of materials, construction techniques and design to ensure that our buildings not only last the test of time but they enhance the environment through energy efficiencies and renewable power.

We have significant experience in employing modern methods of construction and are committed to adopting solutions that promote sustainability. We ensure that we obtain maximum use from the products and materials we utilise, reusing and recycling materials on site, and reducing waste to landfill.

We are well versed in new and cutting-edge construction standards and are able to build to the world's leading environmental assessment methods. We firmly believe that sustainable building goes beyond construction and we design buildings with people in mind so that our schemes deliver their full potential and become a valued part of the communities they serve.



"IF ALL PROJECTS HAD THE SAME OBJECTIVES AND DEDICATION BY THE PROCUREMENT TEAM, IT WOULD MAKE A SIGNIFICANT DIFFERENCE TO THE CARBON EMISSIONS OF ALL NEW NHS BUILDINGS."

Ian Davies, Director of Strategy & Programme Co-ordination for Knowsley PCT, on Bluebell Medical Centre.

1. A landmark civic hub building, Corby Cube integrates public services with recreational spaces. The building is built on a brownfield site and features a predominantly passive natural ventilation strategy, the use of natural lighting, rainwater recycling and green roofs. It also accommodates the UK's first BREEAM "Excellent" rated theatre.
2. We were awarded the complete redevelopment of this flagship M&S store in Luton based on the successful delivery of previous contracts. Demonstrating best practice in sustainability, we have worked closely with M&S on this project, integrating the company's Plan A initiative, the ultimate goal of which is to make M&S the world's most sustainable major retailer.
3. Winning a LIFT Sustainability Award, Bluebell Medical Centre is one of our exemplary health buildings achieving the BREEAM "Excellent" rating through integrated design features. High standards of insulation, air tightness and controlled ventilation form part of this. The centre, which accommodates four GP practices, PCT services and a pharmacy, is part of the Halton, St Helens, Knowsley and Warrington LIFT. We won "Best Supply Chain Partner" at the LIFT Awards for the scheme by demonstrating a commitment to improving services while reducing the overall capital costs of the project's schemes by 25 per cent. We were acknowledged for building strong relationships with communities, providing training and employment and engaging local people through stakeholder workshops to create a "design guide". The guide allowed us to identify and follow best practice, increase scheme lifespans through future-proofing and reduce maintenance costs.

CONSTRUCTION

Infrastructure

We are a leading contractor on infrastructure projects in the public and regulated sectors. Our significant experience and unrivalled competency enables us to offer and deliver a specialist capability from concept and design through to project implementation and maintenance.

Most of our work is delivered through frameworks and long-established collaborative relationships which significantly contribute to our strong long-term order book. With years of experience in this type of working arrangement, we fully grasp the concept of forming true partnerships. We incorporate sustainable solutions to deliver innovative design and industry leading performance.

Our Sectors >

- 1. Data Centres:**
Data centre build, nationwide.
- 2. Energy from Waste:**
Kings Lynn Bio-solids Treatment Works, East Anglia.
- 3. Flood Alleviation:**
Elgin Flood Alleviation Scheme, Moray.
- 4. Ground Engineering:**
Kingston Mills, Bradford on Avon.
- 5. Infrastructure Security:**
Critical national infrastructure projects, nationwide.
- 6. International:**
Halley VI Research Station, Antarctica.
- 7. Rail:**
Newport Railway Station, south Wales.
- 8. Remediation:**
Olympic Park, London.
- 9. Renewable Energy:**
Whitelee Wind Farm, near Glasgow.
- 10. Roads & Bridges:**
M40 Junction 15, Warwickshire.
- 11. Telecommunications:**
Base station upgrades, nationwide.
- 12. Water:**
Marchbank Wastewater Treatment Works, Edinburgh.





CONSTRUCTION > INFRASTRUCTURE

Forming True Partnerships

We have a strong track record in delivering exemplary schemes through partnership working. Testament to our collaboration skills, we have repeatedly worked in long-term frameworks with respected clients in the industry and we are recognised as a major force in construction.

We seek to build lasting and mutually beneficial partnering relationships with all of our clients, establishing clear and aligned objectives which are informed by a thorough understanding of all key project drivers. Embracing the principles of our clients and partners, we deliver optimum whole-life solutions which add value and improve operational efficiency.

We realise the value of working together to identify workable solutions, sharing best practice and transferring knowledge to devise and deliver some of the most complex schemes in the industry.

"GCA HAS AN EXCELLENT UNDERSTANDING OF HOW WE OPERATE AND WHERE THEY CAN LEVERAGE VALUE OUT OF THE END-TO-END DELIVERY OF A PROJECT. GCA BRINGS INNOVATION AND BEST PRACTICE TO ITS PARTNERSHIP WITH UNITED UTILITIES."

Neil Colman, Director for United Utilities' Capital Delivery Programme praises GCA, a joint venture between Galliford Try, Costain and Atkins.



1. Work has begun on the Forth Replacement Crossing, Scotland's single largest transport project for a generation, which is being delivered by the Forth Crossing Bridge Constructors (FCBC), a joint venture between Morrison Construction, Hochtief, Dragados and American Bridge International. Morrison Construction has worked successfully with the client, Transport Scotland (the Scottish Government's transport agency), for many years and brings valuable local expertise to the joint venture.
2. Tilgate reservoir improvements is the first in a series of five projects in the Upper Mole Flood Alleviation Scheme which will improve protection for Crawley and Gatwick airport. The work forms part of a four year framework contract awarded to seven contractors, of which we are one, worth £500m to undertake core works for the Environment Agency across England and Wales.
3. Working in close conjunction with Yorkshire Water and our joint venture partner AECOM, the new activated sludge plant at Mitchell Laithe's Wastewater Treatment Works was completed and commissioned a year ahead of schedule. The work builds on both a 20 year working relationship with Yorkshire Water and our position as number one contractor to the water sector, having renewed frameworks for all of our water industry clients until 2015.

CONSTRUCTION > INFRASTRUCTURE

Scale and Specialism

We execute highly technical, multi-disciplinary projects demonstrating exceptional attention to detail and impressive aptitude.

We are able to achieve outstanding results as we leverage expertise from our specialist businesses to deliver bespoke solutions for increasingly demanding and specialist works. We thrive on the more complex and challenging projects where our competency can be fully utilised.

Our portfolio of infrastructure works also showcases some of the largest and most significant civil engineering projects in the UK. Having completed these projects to award-winning standards, we are known for engineering schemes of international distinction.





2



3



1

1. The largest roads project ever to be carried out in Scotland, the £445m M74 Completion Project provides the missing link across a vital part of west Scotland's motorway network. Delivered by the Interlink Joint Venture eight months ahead of schedule, the scheme won Construction News' award for "Best Project over £50m". Judges said that although the scheme was "technically challenging", "performance ticked every box and safety, cost, time and quality were exemplary".
2. We have had a significant contribution to the construction of various facilities across the venues for the London 2012 Olympic and Paralympic Games. We were one of the first contractors on site, undertaking the demolition, specialist remediation and enabling works across the northern areas of the Olympic Park, one of the largest construction sites in Europe. Further works awarded have included a civil engineering framework covering the basketball arena, pre-games civil engineering and improvement works at Eton Rowing Centre. Additionally, we were awarded a contract for the construction of Lee Valley White Water Canoe Centre - the first newly-constructed Olympic venue to be completed. We were also awarded contracts to both build part of the residential development in Athletes Village and for later post-games remodelling for legacy usage.
3. Halley VI Research Station is a facility dedicated to the study of the earth's atmosphere. Constructed in one of the least hospitable environments known to man, the station accommodates science laboratories and living facilities. It has been built to survive harsh conditions on the Brunt Ice Shelf, a 200m thick ice layer moving at the rate of 0.5km per year. Halley VI's hydraulic legs allow the building to be lifted each year to overcome the accumulation of snow and to compensate for the movement of the ice. Despite the challenges presented by the environment - the risk of being caught in a blizzard, the disorientating white surroundings and the danger of ultraviolet radiation - we have excelled in health and safety, winning worldwide recognition in the form of an "International Safety Award" from the British Safety Council.



CONSTRUCTION > INFRASTRUCTURE

Sustainable Solutions

We ensure sustainability is a primary objective from the beginning of our projects, making it a key benefit of our offering. Working closely with our clients and supply chain, we protect and enhance the environment, continuously looking for opportunities to reduce the environmental impact of the works we undertake.

We aspire to provide longevity in the solutions we deliver and are committed to ensuring best value both now and for the future. We evaluate every aspect of our construction techniques to provide environmentally feasible, exemplary projects. We source sustainable, environmentally sound materials, using them efficiently to minimise waste.

We are familiar with working around wildlife habitats and, whilst upgrading the UK's infrastructure, we are careful to not only protect but, where possible, improve the ecosystems we come into contact with.

Our offering is further strengthened through our ability to fund, design, install, operate and maintain low and zero carbon technologies through our renewable energy business Regeneco.



1. This state-of-the-art anaerobic digestion plant in Cannock, Staffordshire is the biggest in the UK. The facility processes up to 120,000 tonnes of food waste from homes and businesses every year to produce both enough renewable energy to power 6,000 homes and a soil improver that can be used in the same way as compost. The process uses naturally occurring micro-organisms already present in food waste to break it down in the absence of oxygen. The waste reception area of the main building operates under negative air pressure to prevent the escape of odour and dust and the process takes place entirely within a closed environment. Rapid open/shut doors maintain negative air pressure while waste is delivered and compost removed.



2. We supported Tesco in its drive to halve its carbon footprint by 2020 through the delivery of its first batch of turbines. The 27 Ropatec turbines were sited at 20 stores throughout the UK with all generated power provided to the stores assisting in the reduction of Tesco's carbon footprint and on site energy costs.



3. Whitelee Wind Farm, situated near Glasgow, is the largest single onshore wind farm in Europe, generating sufficient energy to power 180,000 homes and potentially off-setting more than 500,000 tonnes of carbon emissions per year. The wind farm has been recognised in the Saltire Society Awards, the Green Apple Awards and the Queen's Awards for Enterprise. This project has enhanced the surrounding habitat by restoring 900ha of blanket bog formerly commercial forestry and enhancing the habitat of bird species including black grouse and merlin. In addition, the project has delivered benefits within the local community providing access via 90km of new tracks to a wide area of previously inaccessible open moorland. This has facilitated walking, mountain biking and other recreational activities.



4. Our flood alleviation works to the River Douglas in Wigan have increased the flood protection level to a 1 in 100 year event. The introduction of hydrobrakes on the newly built attenuation dam has enabled the reduction of the height and volume of the dam fill and decreased the reservoir's footprint by 60 per cent. Additionally, more than 90 per cent of the materials excavated on site have been reused in permanent works on the scheme.

Property Services & Facilities Management

We deliver a comprehensive range of property services and facilities management solutions to the private and public sectors through a customer focused approach. Our commitment to quality service and customer care has built and sustained our reputation as a leading provider in this field.

We provide all encompassing building repair and maintenance services for domestic properties and a full spectrum of hard and soft facilities management services.

We also offer Lifecare, an extended warranty package for clients which provides a fully managed maintenance service including emergency and responsive repairs, planned maintenance and upgrade programmes.

Our high levels of customer service are complemented by a round-the-clock helpdesk which provides customers and clients with an efficient and responsive service.

Our staff personify our values of excellence, passion, integrity and collaboration to deliver high quality solutions in facilities management and property services.





Passionate and Trusted

We recognise that every organisation has differing priorities and we offer bespoke solutions to all our clients ensuring we deliver a service that is tailored to their individual needs.

We use a wide range of leading-edge technologies and systems to support our drive towards exceeding requirements and delivering a timely and cost-effective service. Our highly skilled staff are trained and qualified in many different trades, enabling us to guarantee that the works we undertake always meet the highest standards.

Whether we are working in schools, hospitals or homes, we can be trusted to carry out a range of services with passion and professionalism and be solely focused on achieving maximum customer satisfaction with absolute minimum of disruption in our customers' homes or working environments.

"WORKING ALONGSIDE GALLIFORD TRY MEANS THAT OUR SCHOOL CAN FOCUS ON ITS CORE BUSINESS OF LEARNING AND TEACHING KNOWING THAT THE BUILDINGS AND SITE ISSUES ARE BEING PROFESSIONALLY HANDLED."

Liam Nolan, Head Teacher of Perry Beeches School, part of Birmingham Schools PFI.

1. We deliver better value for money by maintaining the same homes we build through Lifecare, an extended warranty package which provides a full maintenance service for individual homes, apartment blocks and communal areas including emergency cover and responsive repairs, planned maintenance, lifecycle replacements and upgrade programmes. Lifecare is specifically tailored to meet the varying needs of our clients and is fully supported by our internal customer service centre which is accessible to both our customers and their tenants.



2. Our total facilities service at Harlington Upper School extends to catering. We have worked with students to design a healthy lunch menu, sourcing fresh ingredients from local suppliers. We have also introduced new technology enabling canteen staff to charge students for lunch through a finger scanning system which eradicates on-site money exchange.

3. We provide hard facilities management services for Circle, the UK's largest partnership of healthcare professionals. The scope of our service includes 24/7 emergency response at Nottingham Treatment Centre.

4. We deliver full repairs and maintenance services to a range of Registered Providers in the affordable housing sector.



PPP Investments

With award-winning schemes in health and education and a leading position in affordable housing and delivering community facilities, we are a well acknowledged force in Public Private Partnerships (PPPs). We have shared phenomenal success in the delivery of major schemes across the UK and our achievements are founded on our highly regarded ability to partner with clients, consortium members, advisors and our supply chain.

We use a broad range of project management skills and build on our financial strength to undertake projects which deliver best value for all of our stakeholders. Our strong position in the market is underpinned by our ability to provide all the necessary investment funding, building and facilities management skills from within our Group, enabling us to arrange and maintain a range of PPP schemes across the UK.



St. Andrews Community Hospital and Health Centre, Fife.



PPP INVESTMENTS

Best Value through Collaboration

We build on our vast project management skills to co-ordinate visions, views and opinions to truly address the specific needs of our stakeholders and provide sustainable solutions. Our strong collaborative culture is an essential factor in our success, enabling us to work with clients, partners and communities to deliver schemes which have a lasting, positive impact in the neighbourhoods they serve.

We combine our strengths in project management and financial structuring with our abilities in design, construction and maintenance to develop and operate innovative facilities, serving their users to the highest standards possible, whilst boasting outstanding eco credentials.

1. A Galliford Try led consortium is responsible for the provision and procurement of £300m of community facilities across south east Scotland over the next 10 years. The hub South East Scotland Territory initiative will deliver modern joint facilities for the public sector. It is based on a single point of delivery model in which our role can encompass all stages from strategic planning through to project delivery, funding and facilities management via an integrated supply chain.

2. A unique landmark building with dramatic design, The Hive in Worcester is the UK's first fully integrated public and university library. It features a combination of indoor and outdoor working areas, quiet spaces and centres of activity enabling an altogether new library experience. The building is an environmental and sustainable exemplar with a BREEAM "Excellent" rating.

3. Northampton Schools PFI comprised the upgrade of 41 schools within Northamptonshire and was the largest grouped schools project ever to be undertaken in the UK at the time. With the successful delivery of all of these schools to time, cost and quality, it is a testament to the partnership working between public and private sectors.



2

"WE HAVE ACHIEVED A LOT IN A SHORT TIMESCALE AND I BELIEVE THAT, WORKING TOGETHER IN THE FUTURE, WE WILL TAKE PARTNERSHIP WORKING TO A NEW LEVEL."

Jo Elliot, Chair of hub South East Scotland Limited, on the hub South East Scotland Territory initiative.



3

Contact Us

Our business is represented across the UK, maximising the strength of a national network whilst delivering integrated solutions and developing long-lasting regional relationships.

For a comprehensive list of contact details from across our Group, please visit: www.gallifordtry.co.uk/contacts.



Head Office - Galliford Try plc

Cowley Business Park
Cowley, Uxbridge
Middlesex UB8 2AL

T: 01895 855 000

E: info@gallifordtry.co.uk

W: www.gallifordtry.co.uk



1. Barking Foyer, a residential building in London.
2. St Pancras Renaissance London Hotel.
3. "be:" a new homes development in Newhall, Essex.
4. M40 Junction 15.
5. Corby Cube, a landmark civic building in Northamptonshire.
6. The Royal Apartments in Henley-on-Thames, Oxfordshire.
7. The Hive, an integrated public and university library in Worcester.
8. Wigan Wastewater Treatment Works in Greater Manchester.
9. Freshney Green, a housing-led regeneration scheme in Grimsby.

