

Constructing a sustainable future

Corporate Profile

Group overview	02
Introduction to Galliford Try: a leading UK construction and housebuilding group, with a reputation for service quality, a collaborative approach and exemplary best practice.	
Building	04
A well focused range of construction services with expertise in particular sectors: education, health, leisure, commercial and interiors.	
Infrastructure	12
A major force in the improvement of the country's infrastructure and transport networks on projects for the water, highways, rail, remediation, flood alleviation and renewable energy sectors.	
Housebuilding	20
One of the top ten publicly quoted house-builders, specialising in the development of brownfield sites; high quality, individually designed developments and outstanding customer service.	
PPP Investments	28
Leading participants in PPP and PFI, with an unparalleled track record in the areas of education, health, and accommodation for the public sector.	
Affordable housing and regeneration	32
Conceiving and delivering distinctive, award-winning schemes that transform communities and unlock potential through the regeneration of brownfield sites.	
Corporate responsibility	36
Building sustainable communities, taking care of the environment in the areas where we work and with a major focus on health and safety.	
Contacts	40
How to get in touch with us.	

“Galliford Try is one of the UK’s leading construction and housebuilding groups. We are also one of the top 350 public companies in the country, quoted in the FTSE 250 index. Our growth is based upon core values of service quality, a collaborative approach and best practice.

Recognised for our high standards of project delivery, and our approach to innovation and continuous improvement – from customer service, through project design and execution, to the management of our supply chain – we play an increasing role in contributing to the future of the UK’s built environment.”

GREG FITZGERALD
CHIEF EXECUTIVE



GROUP OVERVIEW

Galliford Try's construction business spans the UK and our housebuilding companies cover the South and East of England from Cornwall to Lincolnshire.

Our building operations focus on specific market sectors; nationwide, we have the skills and resources necessary to meet all our clients' needs. Our infrastructure work covers the spectrum of civil engineering across the public and regulated sectors, using our strong skill sets and national support structure. We invest in public/private finance initiatives in essential public services.

The Group's housebuilding business maximises local market knowledge to create strong local brands that have established reputations for quality, individually designed homes and customer service.

Both our construction and housebuilding expertise are driving the growth of our business in the provision of affordable housing and the regeneration of urban areas.



BUILDING

Galliford Try
Construction

Morrison
Construction

INFRASTRUCTURE

Galliford Try Rail

Morrison
Construction
Highways

Galliford Try Water

Morrison
Construction Water

Morrison
Construction Civil
Engineering

Galliford Try
Specialist Services

HOUSEBUILDING

Linden Homes

Midas Homes

Gerald Wood
Homes

Stamford Homes

Linden London
Developments

**PPP
INVESTMENTS**

Galliford Try
Investments

**AFFORDABLE
HOUSING AND
REGENERATION**

Galliford Try
Partnerships

Galliford Try Homes

BUILDING

Leading providers of construction services, we operate as Galliford Try Construction in England and Wales and as Morrison Construction in Scotland. Our spread of work for both public and private sector clients is well balanced and extensive; we specialise in key sectors of the market ensuring a focused approach to the development of the built environment.

Our collaborative culture is unrivalled in the industry, based on our understanding of our clients' construction needs and working in partnership to deliver best value solutions.



ANDY STURGESS
MANAGING DIRECTOR, BUILDING



“Passionate about project delivery, our construction teams work with clients, designers and our supply chain to deliver projects that meet the brief, whether they be major new buildings or intricate refurbishments.”

Our building division is well established in its various markets, with a healthy spread of projects in our chosen sectors. We offer a comprehensive range of construction services across the UK, with specific expertise in the areas of education, health, commercial, leisure, interiors and facilities management, where our reputation and track record are unequalled.

Education is a key area for us – one where we have extensive experience in building schools, academies and colleges. Our knowledge of procurement processes and partnering arrangements, in particular the various public/private initiatives, is extensive and we have won and are carrying out two of the largest multi-school PFI projects in the country. Similarly, in the health sector, we have an enviable track record with hospitals and primary care trusts. Whether we are working with the NHS, within a primary care consortium or with end-user clients, the same focus applies: professional design, leading-edge construction and total project solutions. We also carry out work for the prison estate under framework agreements.

The commercial market, where we are particularly strong in London, has brought us a varied portfolio of projects for major private sector clients, ranging from office space to retail and leisure, and here a key strength is our ability to adapt to changing market conditions.

We have a growing facilities management business that provides services to building owners and occupiers, on both a planned and reactive basis.

From the complexities of period listed properties to modern, intelligent buildings, we pride ourselves on creating buildings that deliver the most challenging of briefs. Building on an exceptional portfolio of landmark projects, and repeat business from many existing clients, we are continually developing our portfolio with around 80% of our future workload secured on criteria other than on a purely price competitive basis.

BUILDING

WIMBLEDON

Successful buildings are all about effective teamwork. The more an entire construction team works together with the client, from original concepts through to project delivery, the more effective the ultimate result.

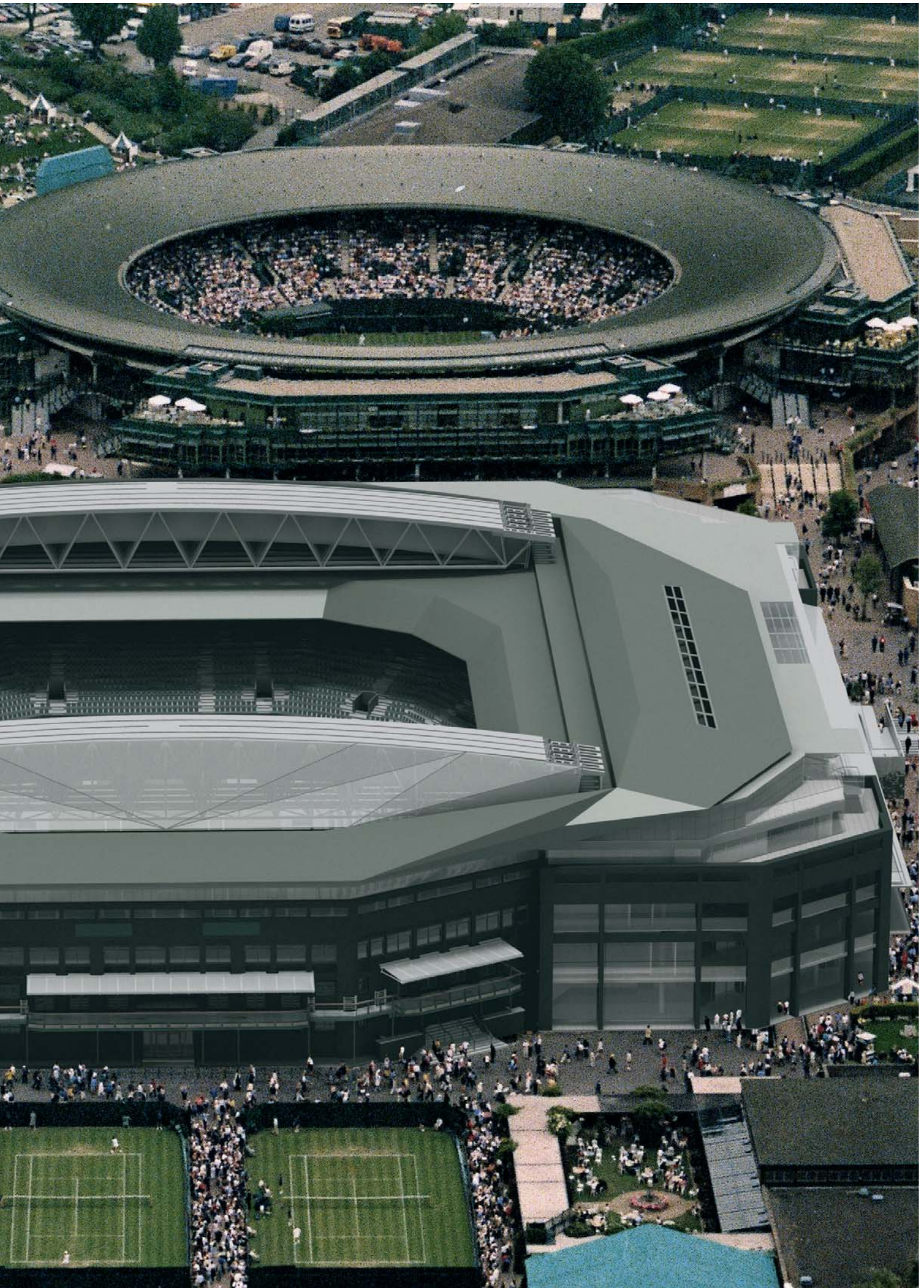
Client: The All England Lawn Tennis Club
Company: Galliford Try Construction South
Location: Wimbledon

Project description: Rebuilding of the Centre Court to increase the stadium capacity from 13,800 to 15,000, installing new accommodation facilities and a completely new roof structure with a retractable and translucent central element. The photograph shows the proposed roof, due to be completed in 2009, superimposed on the existing structure. Galliford Try has worked for the Club for over 30 years and in the last 12 years has built the new number 1 court, broadcast centre, Millennium building and new Wimbledon museum.



Eugene McCormick Project Manager









BUILDING

NORTHAMPTONSHIRE SCHOOLS

Design affects everything – the working of the finished building, the efficiency of the construction process, the cost-effectiveness, and the building's aesthetic appeal. Galliford Try's expertise in design management delivers concepts that work.

Client: Northamptonshire County Council

Company: Galliford Try Construction Central

Project value: £192 million

Location: Northampton

Project description: The design and delivery of 41 schools comprising a mix of new school buildings, extensions and refurbishments being carried out over a three year period under the Government's private finance initiative. When signed in late 2005 the project was the largest ever education PFI.



Craig Benham Project Manager,
Duston School

BUILDING

We offer a comprehensive range of construction services across the UK, working for a range of public and private sector clients, carrying out both long term building programmes and single projects.



HEALTH

Our range of work within healthcare is extensive, covering everything from local primary care centres to major new hospital projects. Here again, our ability to fit in alongside our clients as collaborative partners, combined with



EDUCATION

Our work in education typifies our strategy of specialising in a market where we can develop a good reputation, over many years, for delivering quality product to a range of clients. We invest time and intellect in collaborating with our customers so that we understand how the buildings will be used in practice. This has given Galliford Try an in-depth knowledge base and track record that stand us in good stead when bidding for and securing major new contracts for schools, colleges and universities, including two of the largest UK education PFI projects: 41 schools for Northampton Schools and 11 schools for Highland Schools. These types of contract typically have a three-year timescale, which gives visibility to our future workload, and draws on the full range of resources available within the division.

our record of high quality construction and successful delivery over many years, have given us an enviable reputation. Because we are often working within existing hospital sites, we have to be extremely sensitive in our day-to-day operations. Whether it is as part of a consortium, procuring work through the NHS LIFT process, or working direct to end-user clients, we regularly secure tranches of work that are additional to the initial scope of the project.

LEISURE

We have an exceptional portfolio of work within the leisure sector and, over recent years, have been responsible for the delivery of several landmark developments throughout the UK. Driving this success is our commitment to understanding the ever-changing demands of the market sector and to meeting individual end-user requirements. Ranging from luxury



hotels and fitness centres to museums and cinemas, our capabilities and experience encompass new build, alteration, refurbishment and fit-out. We have redeveloped a country house into a five star hotel, golf and spa resort, built an aviation museum and constructed a sports and leisure complex with indoor and outdoor football pitches. The new National Museum of Liverpool is a major project, but perhaps our highest profile work is also our longest running client relationship, with the All England Lawn Tennis Club, for whom we have been developing Wimbledon's famous venue for over 30 years.

COMMERCIAL

This vibrant sector is one where we have an established portfolio of work. This ranges from new build, mixed use properties for commercial and industrial clients across Scotland and England to multi-storey office buildings with car parks, retail and restaurant premises in the City of London. As the market continues to flourish and expand – particularly in London – we are finding that our ability to adapt to changing market environments and client requirements is proving invaluable. Recently, for example, we have brought our expertise and in-depth resources to a different type of task: a major urban regeneration project in Bermondsey, South London, for the Igloo Fund.

INTERIORS

Our specialist interiors team provides a comprehensive and diverse range of services covering the renovation and refurbishment of residential, commercial and corporate buildings. The interior environment is a complex place, requiring a product that is designed to provide many solutions. Whether delivering a period listed or modern intelligent building, Galliford Try applies its specialist knowledge base and practical experience in everything from structural work, bathrooms, kitchens, flooring and joinery to decorating and soft furnishings. Recent projects have included a conference and banqueting venue, upgrading of single living accommodation for the MOD and high quality refurbishments of large headquarters buildings for various corporate clients.

Galliford Try is a leading contractor on infrastructure projects, focusing on the water, highways, rail, flood alleviation, remediation and renewable energy sectors. Our activities span the full range from design through to project implementation to aftercare. We are a significant force in the public and regulated sectors.

Operating as four main sector businesses – Water, Transport, Civil Engineering and Specialist Services – we deliver high quality solutions for clients such as the Highways Agency, Scottish Power and the Environment Agency, and are the leading contractor for the majority of the UK’s water companies. Most of our work is within frameworks and long-established collaborative relationships, which engender a genuine sense of partnership, provide a forum for innovation in design and project management, and result in a strong long term order book.



The majority of our Infrastructure division's work is carried out in collaborative frameworks for the public and regulated sectors. These long-term partnerships have been created in order to regenerate the country's infrastructure and transport systems, and have been central to the growth of this part of the Group.

Our culture and expertise allow us to build strong integrated teams with our clients, delivering year-on-year efficiency improvements. By turning the concept of partnering into a set of structured, tangible objectives, Galliford Try creates visibility of performance and makes those involved truly accountable. We understand, from experience, how to work in partnership with other team members on large schemes, especially when innovative design solutions are required. We are rigorous in managing the risks associated with completing complex projects, in setting targets and meeting them, and in keeping our promises.

The benefit to our customers is that they know they have a partner in tune with their objectives, meeting their key performance indicators including health and safety, profitability, quality, responsiveness and efficiency, and who is capable of delivering within pre-agreed deadlines.

Our strategy is to create long-term relationships with clients although not all our business falls within such frameworks. Our regionally based civil engineering business remains our market entry point for all infrastructure works, resulting in many and varied one-off projects nationwide, enabling clients to employ any of our services without initial long-term commitment.

KEN GILLESPIE
MANAGING DIRECTOR, INFRASTRUCTURE



“Galliford Try thrives on complex and challenging projects in all its infrastructure work. Through our people we create strong relationships with our clients, designers and other stakeholders to jointly agree objectives and deliver high levels of customer satisfaction.”





INFRASTRUCTURE

ANGLIAN WATER BIOSOLIDS

Through partnership we develop fully integrated project teams with our clients and stakeholders. Through an agreed set of common objectives, performance management and continuous improvement, we seek to improve our client's operational efficiency.

Client: Anglian Water
Company: Galliford Try Water
Location: King's Lynn, Norfolk
Project description: Biosolids Treatment Centre, carried out in joint venture with Imtech as part of Anglian Water's Biosolids Programme.



Chris Hastings Project Manager

INFRASTRUCTURE

ARMITAGE & HANDSACRE

Complex infrastructure projects rely on strong teams creating intelligent, well-planned solutions, whilst understanding the need to maintain public services.

Client: Network Rail

Company: Galliford Try Rail

Location: Armitage & Handsacre, Staffordshire

Project description: Bridge construction and track widening for the Trent Valley Four Tracking scheme, part of the modernisation of the West Coast route.



Andrew Sedgewick Project Manager





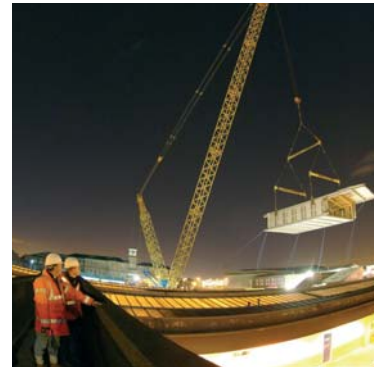
WATER

In our Water business, we regularly work with most of the UK's regulated water companies, as well as a number of private water companies. Our work

We focus on developing an understanding of the client's changing needs and developing solutions to meet them. Our passion is managing intellectually challenging, complex projects requiring industry-leading ideas. Our approach is about **flexibility, adaptability and innovation.**



in this sector has been built through many long-term relationships where we are involved in working alongside our water utility clients in fully integrated teams, identifying and delivering optimum solutions for their capital works programmes with an emphasis on improving both water quality and operational efficiency. This allows joint visibility of workload and controlled risk management.



TRANSPORT

In Transport, growth and diversification have resulted in a portfolio that spans all types of highways and rail work. In the highways sector this ranges from maintenance contracts to the design and build of major roads in urban and remote areas. We have considerable experience of early contractor involvement, which helps to ensure that projects are well planned, designed, costed and constructed. Within Rail we have successfully delivered a portfolio of complex structures, bridges and station improvements. We operate in a challenging environment, applying sound value engineering and value management techniques at all stages from initial feasibility to implementation and final commissioning. Our core team is accredited through the Contractors' Assurance Case and Link-Up registration schemes.

SPECIALIST SERVICES

Specialist Services brings together the niche markets of telecommunications, micro-renewables, ground engineering, the provision of construction plant and vehicles. Our multi-disciplinary telecommunications capabilities have



CIVIL ENGINEERING

We provide a broad and versatile civil engineering service from a network of regional offices throughout the UK. Services include remediation, flood alleviation, regeneration and renewable energy schemes, whilst we continue to identify key business sectors and strategic civil engineering opportunities.

One of our longest standing areas of expertise is regeneration works to all aspects of the UK's canal infrastructure. This sits alongside our broader capability in environmental improvements.

Ground remediation is another cornerstone of our business, typified by our involvement in the regeneration work for the 2012 Olympic Games. Environmental issues are key here, just as they are in our renewable energy work. Among our most notable recent contract wins has been the scheme to construct Europe's largest onshore wind farm in Scotland.

We know how to collaborate with planning authorities, environmental stakeholders and local communities.

led to us delivering turn-key work for blue-chip telecoms clients. Our ground engineering service, Rock and Alluvium, has developed a reputation for speed and efficiency in piling projects.

Through our involvement in both the telecommunications and renewable energy sectors we have rapidly developed an on-site micro-renewable capability.

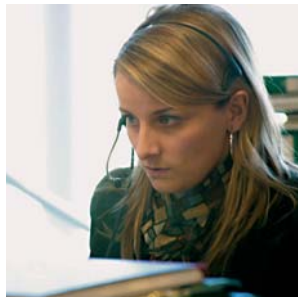
INTERNATIONAL

For the past decade we have provided construction services in the South Atlantic, in particular to the Falklands Islands Government, and in constructing research facilities for the British Antarctic Survey. Working here presents a unique set of challenges, with South Georgia and Antarctica representing some of the harshest environments imaginable, and provides us with a supremely stimulating and rewarding experience.

HOUSEBUILDING

Developing around 3,000 homes annually, Galliford Try is one of the top ten publicly quoted housebuilders in the UK, operating through five strong regional brands: Gerald Wood Homes, Linden Homes, Linden London Developments, Midas Homes and Stamford Homes. Specialists in brownfield sites and conversions from the West Country to Lincolnshire, and from Southampton to South Yorkshire, the businesses differentiate themselves through individually designed, bespoke developments and the provision of outstanding customer service.

Attention to detail, design quality, local knowledge and expertise in developing a high quality offering have led to both our businesses and developments being recognised with a number of national awards.



We are a regional housebuilder that specialises in high quality brownfield development and conversions through our five strong housing brands. Our success stems from our careful selection of sites, the individual nature of each design solution and a devolved management structure that, by being regional in nature, enables local knowledge to inform the businesses at all levels.

A key strength is our substantial landbank of brownfield sites in prime locations close to local amenities and transport links. Through our excellent working relationships with local authorities, we have forged a reputation for unlocking and maximising the true potential of sites; while the use of community planning exhibitions helps us to involve local residents and interest groups early in the planning process.

We have a reputation for creating individual, bespoke homes that, increasingly, incorporate sustainable design solutions. Our continued growth is based on a commitment to excellence and an ability to create living environments that exceed customer expectations. As part of our green credentials, we encourage the specification of environmentally friendly features and the use of energy-efficient materials, including timber frame construction.

Expertise from across our companies and the wider Galliford Try Group feeds in to all our local brands and, in turn, benefits our customers in the form of a better end product and home-buying experience. Consequently our customer service results in national surveys have been excellent, with all the businesses achieving 4 or 5 star ratings. The division has been rewarded with many prestigious industry accolades, most notably Midas Homes' success as Housebuilder of the Year at the Building Magazine Awards 2007, following Linden Homes winning the title for the previous two years.

CHRIS COATES
MANAGING DIRECTOR, HOUSEBUILDING
SOUTH EAST



IAN BAKER
MANAGING DIRECTOR, HOUSEBUILDING
MIDLANDS, SOUTH AND SOUTH WEST



“Signature architecture, flexible internal layouts and contemporary design features – as well as a prime location – are all hallmarks of our developments, enabling us to become a market leader in the areas where we operate.”

HOUSEBUILDING

WATER COLOUR

We have the skills and resources to take complex brownfield projects through the entire process from remediation to the creation of a new community.

Company: Linden Homes South East

Size of project: 500 homes

Location: Redhill, Surrey

Project description: We are transforming Holmethorpe Quarry into a prestigious waterside village, providing a new residential quarter in this part of Surrey and including some 500 homes with open spaces and a wetland nature reserve. Signature architecture and high internal specification make this a landmark development – some of the homes overlook reed beds and a lagoon.

One of the initial challenges in this project was the construction of an underbridge, through the Gatwick Express train line, to give access to a nearby industrial estate and take heavy lorries away from residential roads. Maximising safety and minimising disruption, we chose to install the bridge over the Christmas period.



Stewart Chaffey Contracts Manager









HOUSEBUILDING

THE VILLAGE

Individual designs and imaginative schemes, drawn up with in-depth local involvement, lead to award-winning developments.

Client: The Village

Company: Midas Homes

Size of project: 148 homes

Location: St Austell, Cornwall

Project description: A project that typifies many of our strengths. We are completing the final phase of The Village, a former rail yard close to the centre of a busy, thriving town. Public meetings formed a key part of the planning process, with workshops and consultations that gave local people input into the design process. This has contributed to a positive sense of ownership and local pride; the Mail on Sunday's British Homes Awards 2007 awarded the Village the accolade of 'Best Affordable Housing Development'.

We collaborated with Devon & Cornwall Housing Association, Restormel Borough Council and Alan Leather Architects, as well as taking into account the ideas of local residents, to create this award-winning development.



Rob Wakeham Project Manager

We regularly win accolades for our homes, developments and businesses. These range from awards for design and sustainability through to the Building Magazine 'Housebuilder of the Year' for three years running – Linden Homes in 2005 and 2006 and Midas Homes in 2007.



LINDEN HOMES

Linden Homes operates in the South and the South East of England building around 1,900 homes each year. All of our developments are constructed on brownfield land and we have built a reputation for high quality conversions and individual new homes. Working in urban and semi-urban areas, we are also specialists in mixed use developments, combining housing for sale with commercial or retail space as well as homes for the affordable sector.

Many of our developments provide affordable housing seamlessly integrated with housing for private sale. Linden has strong partnerships with housing associations and works in partnership to regenerate inner urban areas with much needed accommodation on a broad range of tenancy agreements.

Having secured the 'Housebuilder of the Year' Award for 2005 and 2006, the reputation of the business for customer service and quality is industry-leading.

MIDAS HOMES

Midas Homes builds approximately 600 homes every year throughout the South West of England. From refurbished properties to new build, and ranging from one-bedroom apartments to five-bedroom homes, our portfolio is broad and encompasses a range of styles



including large, urban developments, smaller rural developments with thatched cottages and waterside developments. We have a track record of successfully developing difficult brownfield sites.

We build homes for sale on our own developments and work as a partner with housing associations, local authorities and others to provide affordable housing.

We seek to deliver developments which are innovative and sustainable; cohesive; have a positive balance in land use structure and housing type, mix and tenure; have safe and secure public streets and spaces based upon best practice in urban design; use high quality, contemporary architecture which is designed with local building traditions in mind; and provide homes that are distinctive to an area.

STAMFORD HOMES

With over 50 years' experience, Stamford Homes has grown into one of the UK's leading regional housebuilders, with a strong reputation for the boldness



GERALD WOOD HOMES

Focused on locations in Devon and Cornwall, Gerald Wood Homes builds luxury homes in attractive village locations; these range from single, detached houses to exclusive private developments. The majority of Gerald Wood Homes' output is built on brownfield land.

Each of the company's developments is skilfully created to make the most of its special location and we offer uniquely conceived homes featuring the best quality fittings and a very high standard of specification. There are no standard house types. Careful thought goes into the interior detailing of every home – Gerald Wood homes are designed for the customers who buy them.

and individuality of its houses. Following the acquisition of Chartdale Homes in 2006, Stamford Homes now develops around 600 new homes each year across the Eastern counties and the East Midlands.

A growing portfolio of sites encompasses urban and rural environments in new build and selective conversions. The product mix is broad, from two-bedroom coach houses through to five-bedroom town houses, upside-down living and individual architect-designed homes. External finishes and architectural details reflect the local setting.

LINDEN LONDON DEVELOPMENTS

Linden London Developments has been established to develop significant sites in the Greater London area. Drawing on Galliford Try's expertise of working in congested city centres, and with a track record in designing contemporary living spaces that attract urban dwellers with the advantages of proximity to amenities and good transport links, the business has the resources and backing to become one of the capital's more significant developers.

PPP INVESTMENTS

The role of PPP Investments is to develop and take equity participation in public/private partnerships, including private finance initiatives (PFI) and other Government procurement routes such as the NHS LIFT framework for primary care trusts and the Building Schools for the Future programme.

We are a leading provider for public sector work in the areas of accommodation for the Ministry of Defence, education and health. Our approach is one of partnership with funders, contractors, designers, services providers and public sector clients based on transparency, continuous improvement and whole project life. Our excellent track record in these schemes has led to negotiated work for our construction and facilities management businesses, while providing best value to the client and users of the service we deliver.



FRANK NELSON
GROUP FINANCE DIRECTOR



“Our investments team has managed the arrangement and funding of over 20 private/public partnership projects, and we have excellent relationships with the key financial investors in the sector.”

The UK Government has led the way in infrastructure and urban regeneration projects on a large scale, through its programme of public/private partnerships (PPP) and the private finance initiative (PFI). Private companies have been able to form partnerships with public sector bodies in order to deliver improved public services on a competitive long-term basis. Several hundred projects have already been completed with high levels of end-user satisfaction, according to UK Treasury reports, and there are a further 200 projects in the pipeline up to 2010. They bring together the best outside resources in project design and implementation skills, to work in collaboration, and cover every aspect of the procurement process from seed-corn investment at the start, through provision of capital for mainstream project finance, to final fit-out, delivery and long-term maintenance.

Our Investments division has played a leading role in this, using our broad range of financial skills, and the results have been impressive: a long-term visible stream of construction work being generated for companies across the Group and a growing value in the equity stakes we hold. Our team operates across the UK with offices in London, Birmingham, Edinburgh and Inverness and has arranged and funded over 20 PPP projects with a total capital expenditure in excess of £1.3 billion, including two of the largest multi-school PFI projects in the UK.

One of our key strengths is our skill at partnering, both with our clients and with consortia members, advisers and the supply chain. We continue to build solid relationships with all our stakeholders and focus on projects where we can succeed by adding value, principally in the areas of accommodation, custodial facilities, education and health. We take a proactive approach to bidding and we plan for as much early involvement as possible. This targeted approach ensures that – on every bid – we know that we have the capacity, commitment, enthusiasm and passion to deliver the project.





PPP INVESTMENTS

HIGHLAND SCHOOLS PFI

Starting with only an output specification, we put together an entire team to design, finance and deliver buildings and then service and maintain them for 25 years; this is the challenge we rise to in each of our projects.

Client: The Highland Council

Company: Galliford Try Investments

Size of project: 11 schools

Location: Scottish Highlands

Project description: Innovative bond financing, first class designs for both primary and secondary schools across the highlands of Scotland and quality supply chain partners to deliver construction and operational services secured one of Scotland's largest educational projects.



David Gay Concession Director

AFFORDABLE HOUSING
AND REGENERATION

We are a leading player in the affordable housing and urban regeneration sector. The division is managed by a highly experienced team of specialists – in planning, affordable housing, community consultation and environmental issues. Working closely with a range of partners, we conceive and construct distinctive residential, commercial, leisure, community and mixed use developments.

Our award-winning schemes have helped transform communities and deliver lasting change. With decades of experience building homes, schools, hospitals and infrastructure, Galliford Try is uniquely positioned to turn visionary plans into practical reality.



STEPHEN TEAGLE
GROUP AFFORDABLE HOUSING DIRECTOR



“What differentiates us is our ability to provide all the necessary construction and housebuilding skills from within the Group; few others can offer such a range of expertise.”

Affordable housing and regeneration is a key growth area for the Group. Our skills set, as a hybrid contractor developer, coupled with a genuine partnering expertise, ensures we can capitalise on growth as the government drives forward its mission for 3 million new homes by 2020. That mission lays heavy emphasis on regeneration – on affordable housing, mixed-use schemes, brownfield development, environmentally responsible technology, the construction of supporting infrastructure and the need to work in partnership with a range of local authority and public and private commissioning bodies.

Currently, Galliford Try is English Partnerships' preferred development partner for the regeneration of former hospital sites in Colchester, South Oxfordshire, Epsom and Chichester, where we are involved in a landmark net zero carbon scheme for 800 homes and community buildings. In addition we are transforming estates and creating new mixed tenure neighbourhoods in markets as diverse as Grimsby, Plymouth, Tower Hamlets and Camborne.

The range of design briefs is very varied. Working in collaboration with the Housing Corporation and The Prince's Trust, a former rail yard in the centre of St Austell encompasses live/work units, shared ownership accommodation, houses and flats for sale and office/retail space. 348 new homes, a doctor's surgery, veterinary hospital, supermarket and leisure centre were designed into a site at Caterham containing several Grade II listed buildings. This is one of the first examples of a private developer using consensus-led masterplanning to create a sustainable community.

Projects like this position Galliford Try as an industry leader, with our schemes winning top UK awards – the Housing Corporation Award for Broadclose in Bude, the Housing Design Award for Gun Wharf in Plymouth, Best Sustainable Development for Livarot Walk and Best Affordable Development for a mixed use scheme in St. Austell.

AFFORDABLE HOUSING AND REGENERATION

GUN WHARF

This pioneering scheme, which won CABA's 'Best Housing-led Regeneration Project for 2006' in their Building for Life awards, starts to illustrate the full potential of this location, transforming it – in their words – 'from a forgotten sink into a wellspring of renewal'.

Company: Midas Homes

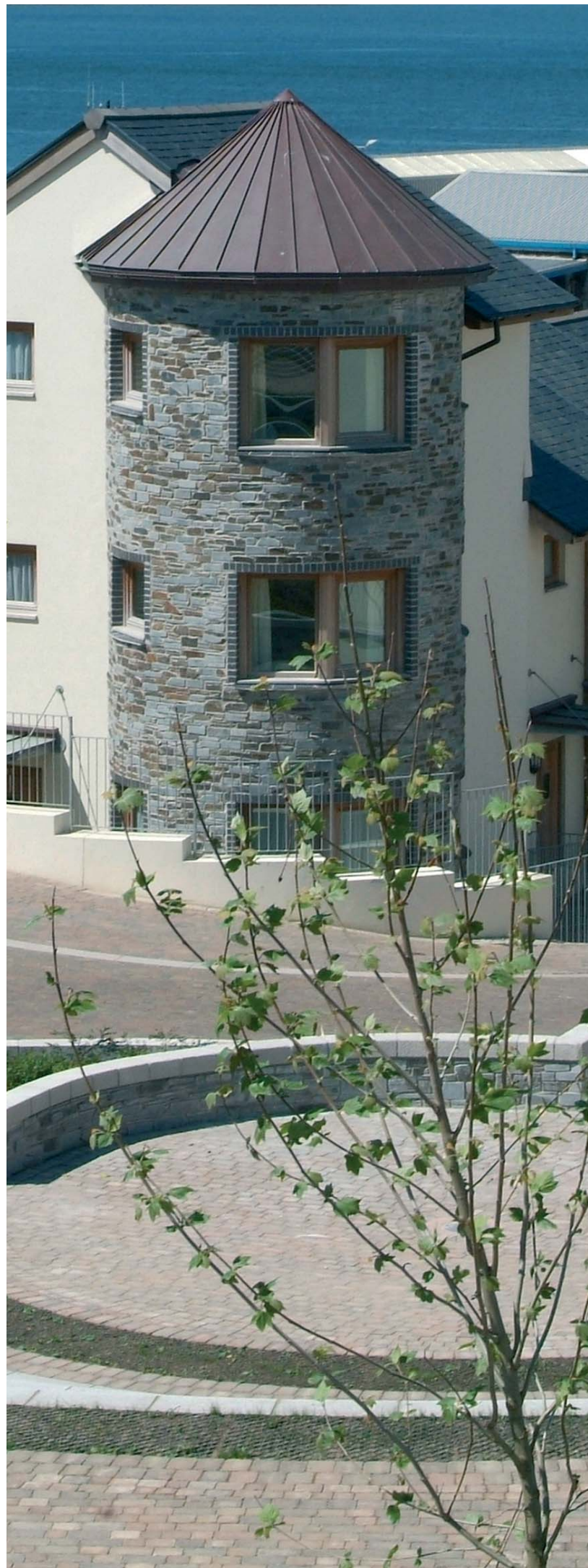
Size of project: 99 homes

Location: Gun Wharf, Plymouth

Project description: A scheme at Devonport, near Plymouth, has transformed a post-war estate into houses and flats, some of them on a shared ownership basis. Gun Wharf's success was in part due to the public meetings and workshops that we organised; it typifies our 'Homezone' approach, whose principal aim is to increase the quality of living by listening to local concerns. As a result of these consultations, we retained original features such as cobbled streets and provided community facilities.



Robin Palmer Site Manager





Construction operations affect local communities and we have a responsibility to all those who come into contact with our activities. We have a major focus on the management of health, safety and environmental controls on our sites.

We aim to make a positive impact within the communities where we operate by contributing economically, environmentally and socially. Much of our work is geared towards improving the built environment: restoring derelict buildings, regenerating run-down areas and remediating polluted land. We champion sustainable initiatives in our business wherever we can.

We provide homes for the affordable market, and work with the providers of essential services such as education, health, transport, water and renewable energy.

Our aim is to maintain high standards of corporate responsibility.

We recognise that the work we do has an impact on society. We aim to be an employer of choice, an industry leader with best practice employment policies and practices. Our people are the key to our success, and we were one of the first companies in our industry to be Investor in People accredited throughout our businesses.

We rely on a supply chain of sub contractors, consultants and other service providers, many of whom have worked with us regularly over a number of years, and with whom we have a reputation for constructive partnerships and fair and transparent dealings.

We play a key role in the building of sustainable communities. We contribute substantial sums through Section 106 planning agreements that provide contributions to public transport, footpaths and cycle ways, education and healthcare and improvements to public open spaces.

Many of our business units are certified to the environmental standard ISO 14000:2004 and we aim to achieve this throughout the Group.

We are a major investor in schools and healthcare facilities through the Public Finance Initiative, as well as being one of the most experienced contractors in the UK at building these projects. Our role in the advancement of our industry is based on our membership of the Major Contractors Group, the Construction Confederation and the Homebuilders Federation.

We visit schools near to our operations so that we can educate children both about the dangers of construction sites and also about the opportunities that a career in construction can bring. We take great care to explain our proposals for housing developments to local communities and have consistently scored in the top rank of general housebuilders in the Home Builders Federation national customer satisfaction surveys.

RICHARD BARRACLOUGH
COMPANY SECRETARY



“Galliford Try aims to be a leading player, wherever it operates, in the construction of a sustainable future. Our corporate responsibilities are at the forefront of our thinking and our objective is to rise to the challenge of sustainability, in the context of good business sense.”

RoSPA GOLD AWARDS

This prestigious national award recognises excellence in health and safety performance and is given by the Royal Society for the Prevention of Accidents. However it is far more than –



INVESTOR IN PEOPLE

Galliford Try is an accredited “Investor in People” across the Group, the principles of which underpin our human resource policies and our training and development strategy.

We carry out regular team and business unit briefings to keep our people informed, organise an annual employee survey to enable staff to give their views on all aspects of their employment, and base our programme of training and development on annual performance and development reviews.



as the name might initially imply – purely about accident rates. A panel of expert adjudicators examine a broad portfolio of evidence from the company to show the level and development of our health and safety management process.

To qualify, we demonstrate meaningful objectives and initiatives, robust systems to ensure compliance with legislation, best practice and an overall Group culture in this vital area of our operations. It is an achievement that requires dedication and support at every level, from Board to site manager, and the individual business units’ motivation and desire to provide everyone with a safe working environment.



SUSTAINABLE DEVELOPMENT

Award-winning projects such as our Livarot Walk development – 35 affordable homes at South Molton in Devon – are being recognised by leading industry bodies for the ways in which we focus on sustainability and the environment. Having won the National Home Builder ‘Design Award’ and the What House? Gold Award for Best Sustainable Development, this site typifies the type of initiatives we specialise in.

These homes feature environmentally friendly heat and energy saving technology, as well as efficient water recycling systems, and use a high percentage of materials that are specified from renewable sources. The What House? judges praised the outstanding insulation levels, detailed selection of materials, site facilities and provision of transport links; their specification sets a new standard for others to follow.

INVOLVING THE COMMUNITY

Typifying our commitment to education in the communities where our projects are situated, we held an information session with this school in Aberdeenshire, in partnership with Scottish Water Solutions. It gave the children an opportunity to find out more about



the new wastewater treatment works that Morrison Construction has been developing in order to connect all the properties in the village, including the school itself, to the new plant.

We take our performance in the Considerate Contractors Scheme very seriously. This industry-wide initiative rates sites on a range of categories from environmental awareness to good neighbour practices. Regularly receiving high scores, Galliford Try Partnerships recently secured two bronze and one gold award.



DEVELOPING FOR THE FUTURE

Learning and career development is an important part of our business ethos. We have an extensive training and development framework that provides a range of learning opportunities leading to nationally recognised qualifications and membership of appropriate professional bodies.

We are committed to an annual intake of apprentices, trainees and graduates across the Group, providing structured training programmes at all levels. We provide work placements for students requiring experience in the industry and offer sponsorships to undergraduates.

The photograph above shows new management trainees joining the Galliford Try partnerships programme where they will gain hands-on experience in many areas of the business, including estimating, design and build, surveying and production, while achieving a recognised qualification.



SUPPORTING CHARITY

Galliford Try often contributes to local charities within the areas where it operates, and supports fund-raising by its employees. In addition it is a patron of CRASH, a charity dedicated to supporting the homeless, and a sponsor of the Lighthouse Club, a construction industry charity providing support to families in need. The photograph above shows a Midas Homes team taking part in a "5-a-side World Cup" charity fundraising event for Hospiscare.

CONTACTS

Galliford Try plc

Cowley Business Park

Cowley

Uxbridge UB8 2AL

Tel: 01895 855 001

Email: plc@gallifordtry.co.uk

Website: www.gallifordtry.co.uk

Chief Executive: Greg Fitzgerald

Finance Director: Frank Nelson

Managing Director, Building: Andy Sturgess

Managing Director, Infrastructure: Ken Gillespie

Managing Director, Housebuilding,

Midlands, South & South West: Ian Baker

Managing Director, Housebuilding, South East: Chris Coates

Company Secretary: Richard Barraclough

Building

Galliford Try Construction North

Innovation House

Daten Park

Birchwood

Warrington

Cheshire WA2 0XR

Tel: 01925 822 821

MD: Chris Bond

Galliford Try Construction Central

Wolvey

Hinckley

Leicestershire LE10 3JF

Tel: 01455 222 777

MD: Chris Bond

Galliford Try Construction South

Cowley Business Park

Cowley

Uxbridge

Middlesex UB8 2AL

Tel: 01895 855 000

MD: James Armitage

Morrison Construction

Kirkton Avenue

Pitmeddon Road

Industrial Estate

Dyce

Aberdeen AB21 0BF

Tel: 01224 725 244

MD: David Downie

Infrastructure

Morrison Construction

Civil Engineering

Wolvey

Hinckley

Leicestershire LE10 3JF

Tel: 01455 222 753

MD: Steve Walsh

Galliford Try Transport

Crab Lane

Fearnhead

Warrington

Cheshire WA2 0XR

Tel: 01925 822 821

MD: Colin Crumlin

Galliford Try Specialist Services

Wolvey

Hinckley

Leicestershire LE10 3JF

Tel: 01455 222 792

MD: Dean Ashton

Galliford Try Water & Morrison

Construction Water

Wolvey

Hinckley

Leicestershire LE10 3JH

Tel: 01455 222 753

MD: David Bevan

PPP Investments

Galliford Try Investments

Wolvey

Hinckley

Leicestershire LE10 3JF

Tel: 01455 222 777

MD: Alan Flood

Galliford Try Investments

51 Melville Street

Edinburgh EH3 7HL

Tel: 0131 200 4400

Dep MD: Andrew Richards

Housebuilding

Stamford Homes Midlands

Ashurst, Southgate Park

Bakewell Road

Orton Southgate

Peterborough PE2 6YS

Tel: 01733 396 600

MD: Mike Dempsey

Stamford Homes North

The Old Dairy

231-233 Heneage Road

Grimsby

Lincolnshire DN32 9JE

Tel: 01472 362 061

MD: Brendan Blythe

Linden Homes Southern

Linden House

14 Bartram Road

Totton

Southampton SO40 9PP

Tel: 023 8066 5100

MD: Pat Feighery

Midas Homes and

Gerald Wood Homes

Homeside House

Silverhills Road

Newton Abbott

Devon TQ12 5YZ

Tel: 01626 356 666

MD: Bill Cawse

Linden Homes Western

Linden House

The Jacobs Building

Berkeley Place

Clifton

Bristol BS8 1EH

Tel: 0117 930 4949

MD: Toby Ballard

Linden Homes South East

Linden House

Guards Avenue

Caterham

Surrey CR3 5XL

Tel: 01883 334 400

MD: Paul Cooper

Linden Homes Chiltern

Linden House

Linden Square

Harefield

Middlesex UB9 6TQ

Tel: 01895 827 400

MD: Tom Nicholson

Linden Homes Thames Valley

The Old Brewery

Brewery Courtyard

Draymans Lane, Marlow

Buckinghamshire SL7 2FF

Tel: 01628 495 940

MD: Ian Ralston

Linden London Developments

18 Hanover Square

London W1S 1HX

Tel: 020 3159 5220

Directors: Steve Lavers

Gary Durden

Affordable Housing and Regeneration

Galliford Try Homes

Homeside House

Silverhills Road

Newton Abbott

Devon TQ12 5YZ

Tel: 01626 356 666

Director: Stephen Teagle

Galliford Try Partnerships

Hodgson House

50 Rainsford Road

Chelmsford

Essex CM1 2XB

Tel: 01245 494 849

MD: Stuart Gibbons

